

22.08.2017

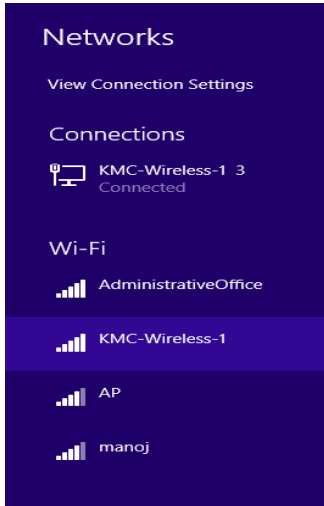
NOTICE

This is for the information to all the students of First Year that they may come and collect their WiFi IDs & Passwords as per the below given schedule:

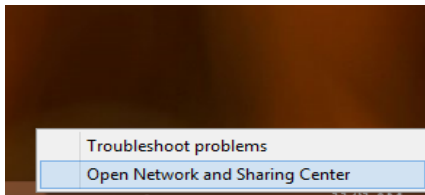
S.No.	Distributor Name	Roll No.	
		From	To
1.	Mr. Jitender Kumar	11711701	11723806
2.	Mr. Sanjeet Singh	11723807	11739769

Students may collect their IDs & Passwords from **Computer Lab 1 & 2** between **(3:40 pm to 4:40 pm)** from **22.08.2017 (Tuesday)** till **24.08.2017 (Thursday)**. **College ID Cards** are required for verification.

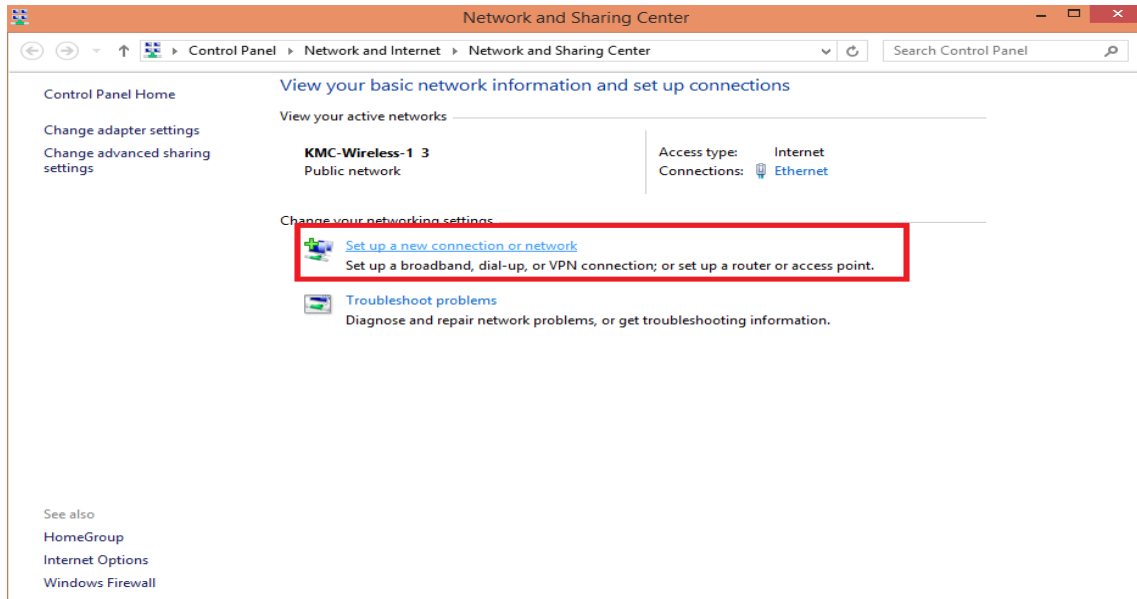
1. Select the SSID to connect as **KMC-Wireless-1**.



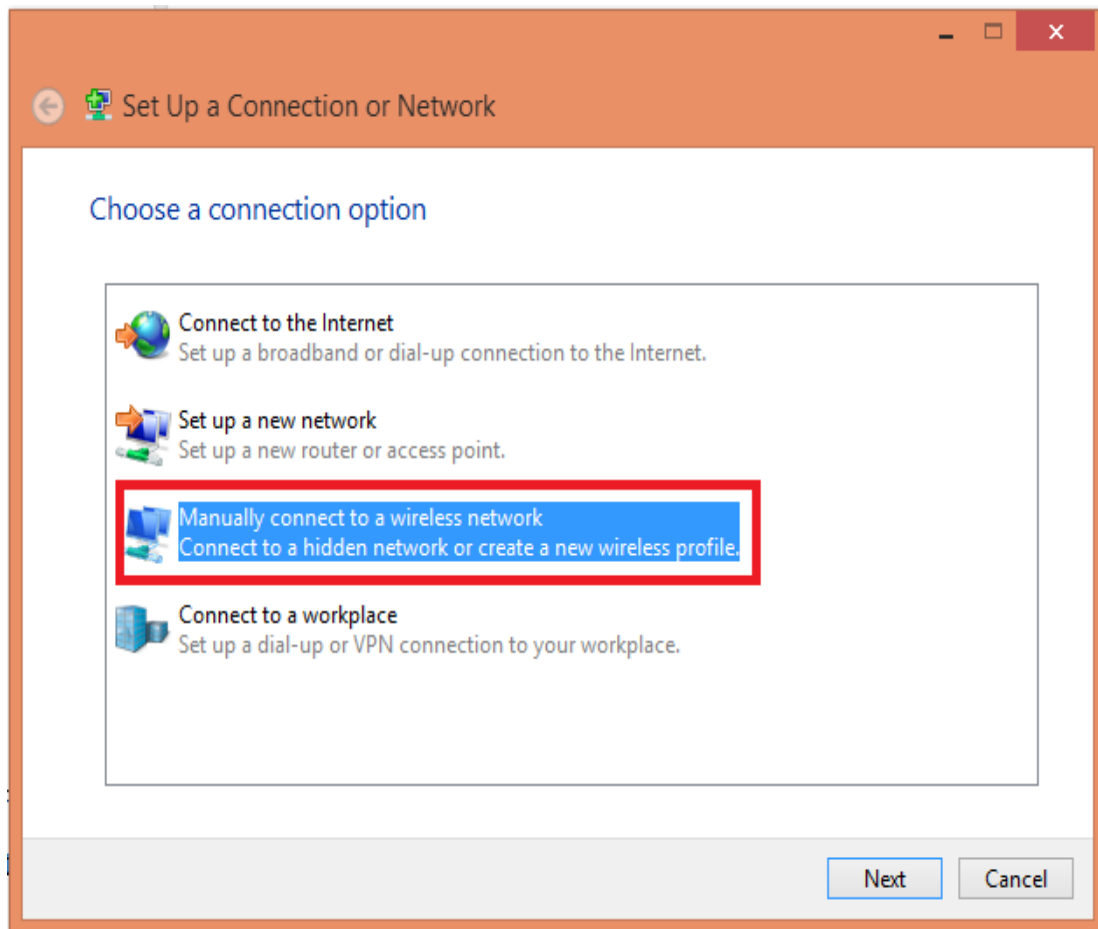
2. For Windows 7 OS, changes in settings will be required. To change the setting selects the **open network and sharing center**.



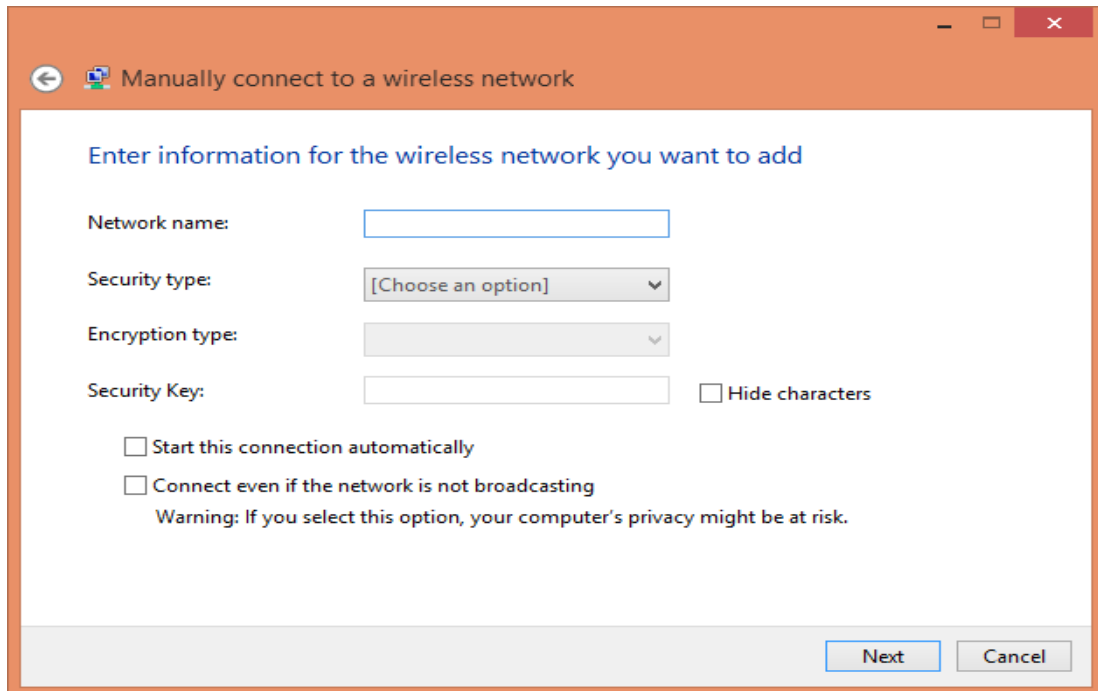
3. Select the option **Set up a new connection or network** to manually edit/create new SSID profile.



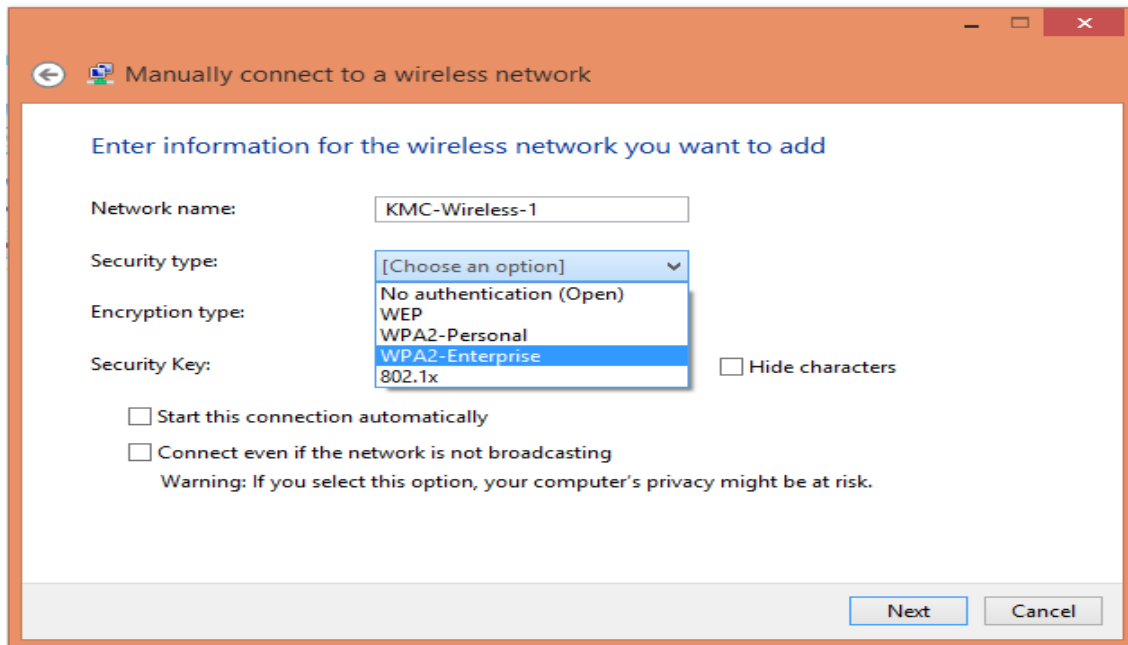
4. Select the option **manually connect to a wireless network**.



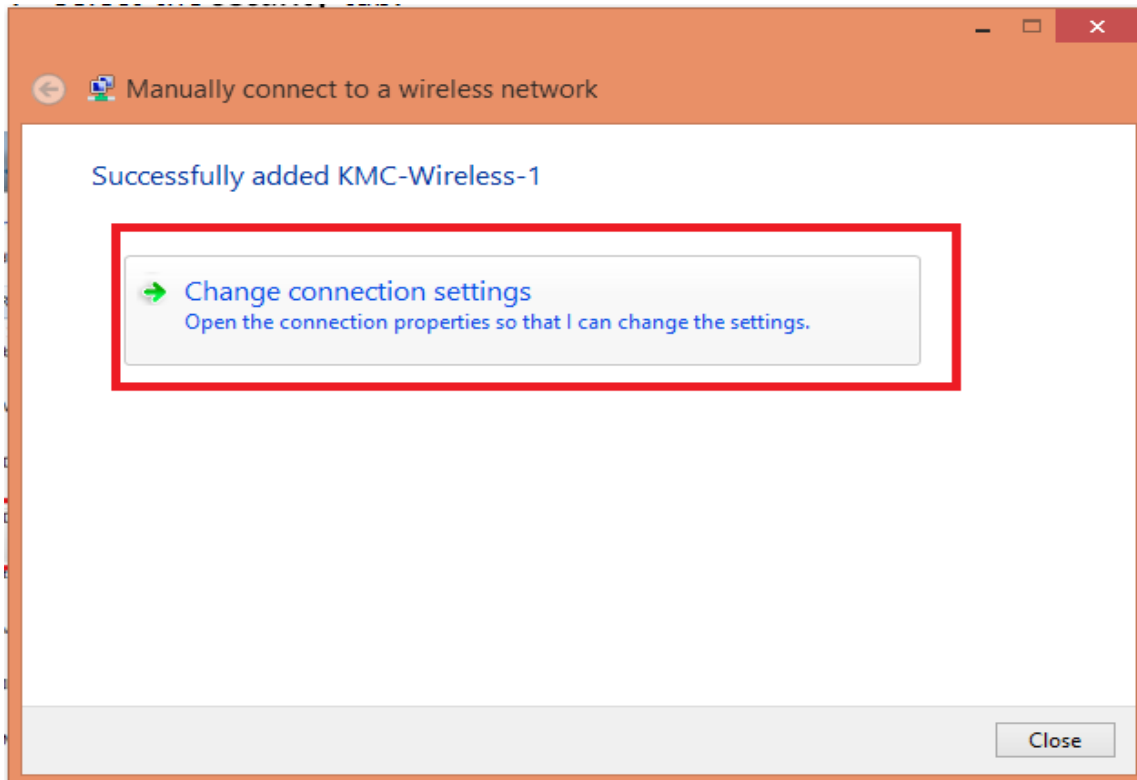
5. Selection option **Manual Create a network profile**



6. Select the profile **KMC-Wireless-1** to do the changes and security key as **WPA2-Enterprise** and click **next** and then **finish**

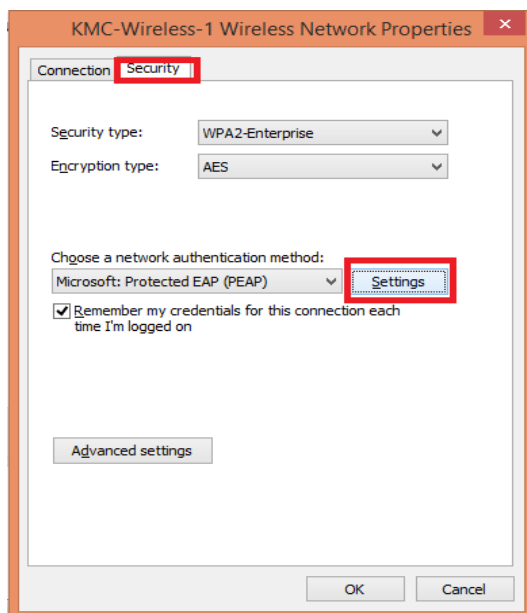


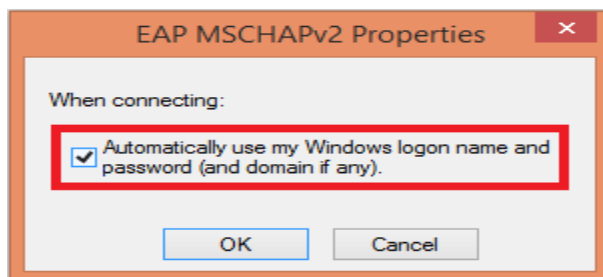
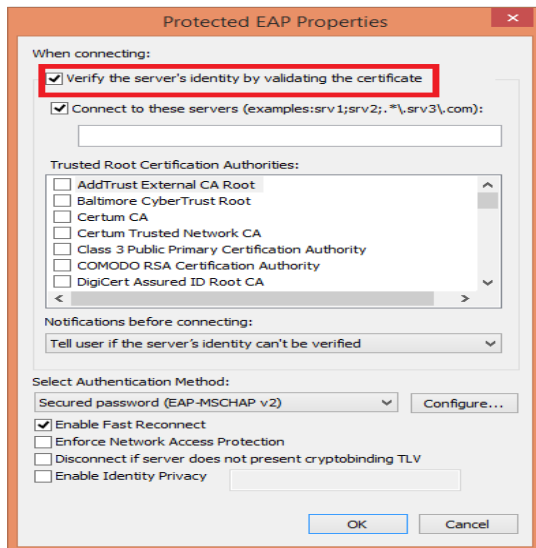
7. Select Change Connection Settings.



8.) Select Security then, the PEAP setting and **uncheck the validate server certificate** and **un-check automatically use my Windows name and password**.

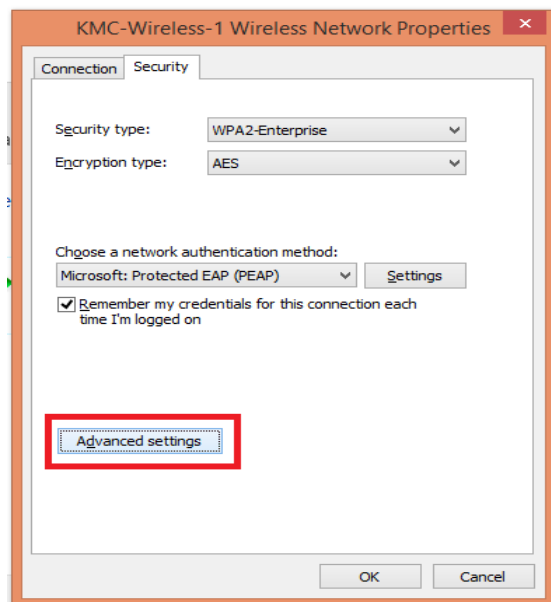
Important point don't miss it

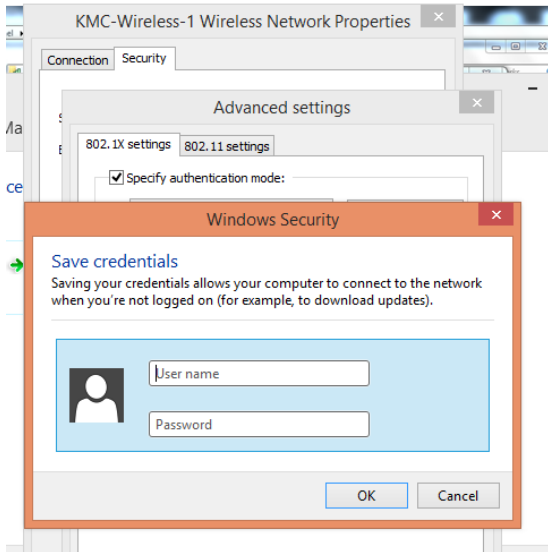
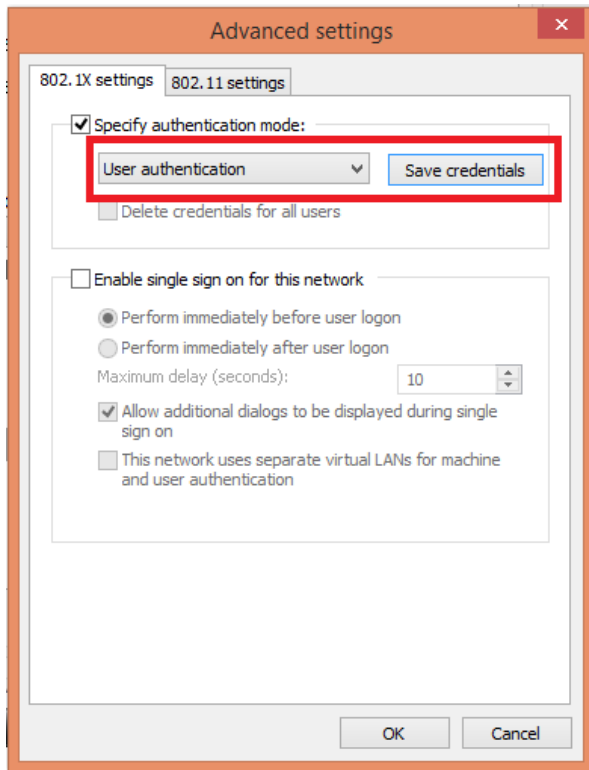




9.) Select Advance setting and select the user authentication option as mentioned in below screen and save your **username and password credentials**.

Important point don't miss it





10. Now you can connect the SSID and will show you the status as **connected**.

View Connection Settings

Connections



KMC-Wireless-1 3
Connected

Wi-Fi



KMC-Wireless-1
Connected



Redmi



AndroidAP



AdministrativeOffice