

24.08.2017

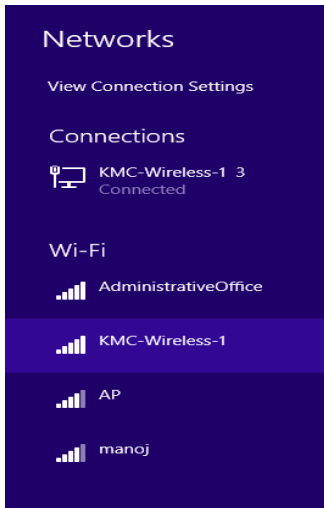
## **NOTICE**

This is for the information to all the students of Second Year that they may come and collect their WiFi IDs & Passwords as per the below given schedule:

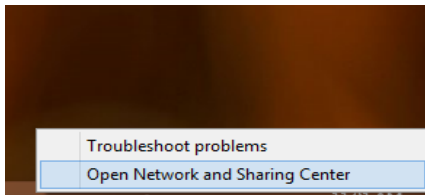
<b>S.No.</b>	<b>Distributor Name</b>	<b>Roll No.</b>	
		<b>From</b>	<b>To</b>
<b>1.</b>	<b>Mr. Jitender Kumar</b>	<b>21523234</b>	<b>21623478</b>
<b>2.</b>	<b>Mr. Sanjeet Singh</b>	<b>21623479</b>	<b>21639461</b>

Students may collect their IDs & Passwords from **Computer Lab 1 & 2** between **(3:40 pm to 4:40 pm)** from **25.08.2017 (Friday)** till **29.08.2017 (Tuesday)** excluding **Saturday (26.08.2017) & Sunday (27.08.2017)**. **College ID Cards** are required for verification. The wifi firstly has to be connected on the PC or Laptop.

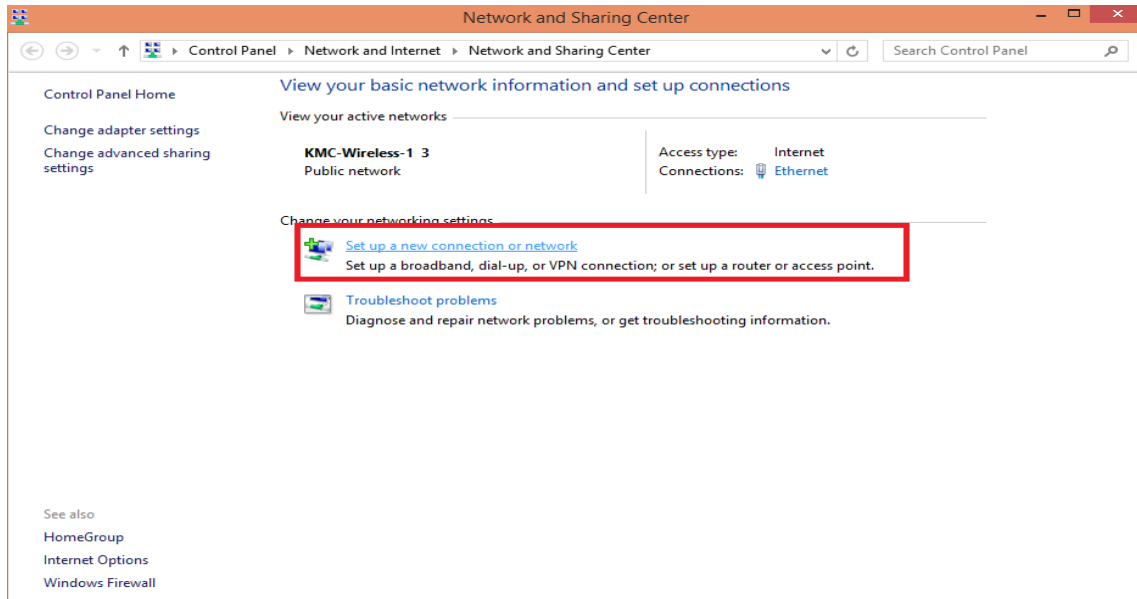
1. Select the SSID to connect as **KMC-Wireless-1**.



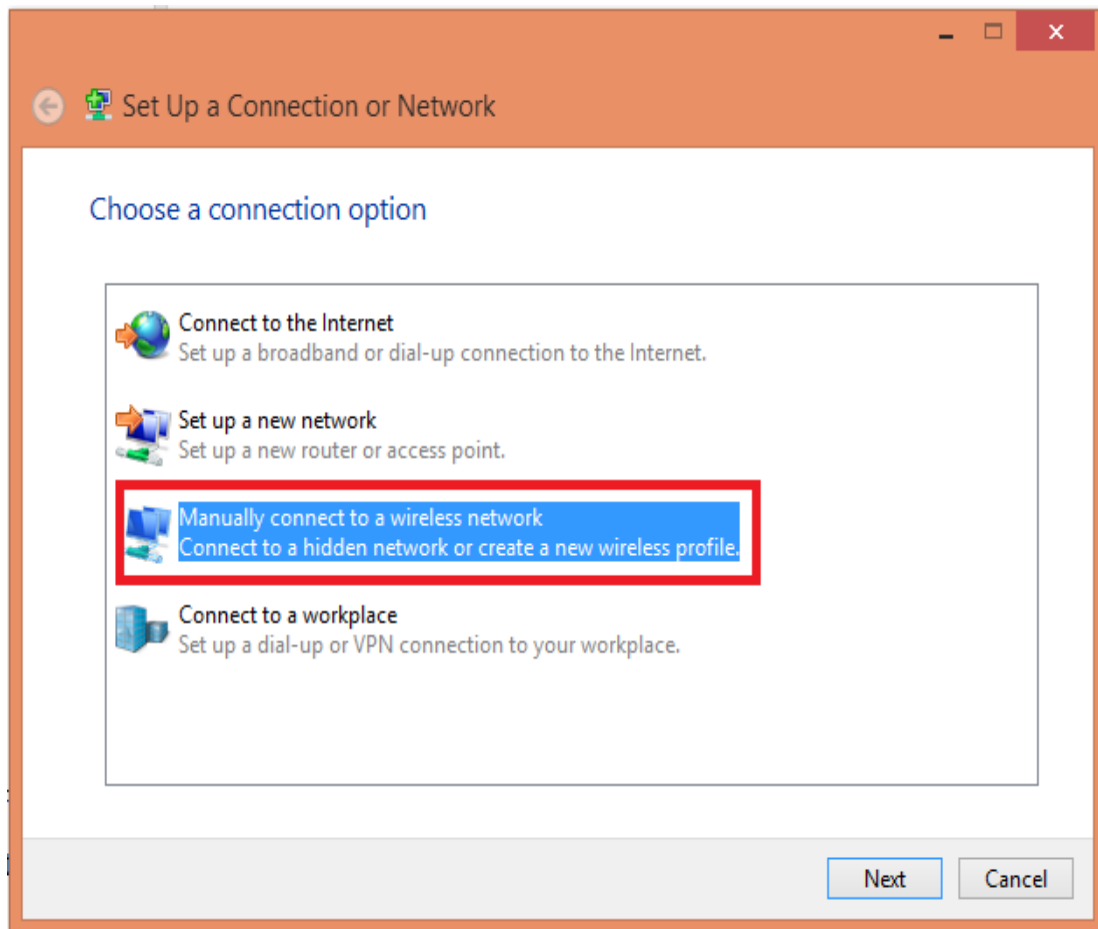
2. For Windows 7 OS, changes in settings will be required. To change the setting selects the **open network and sharing center**.



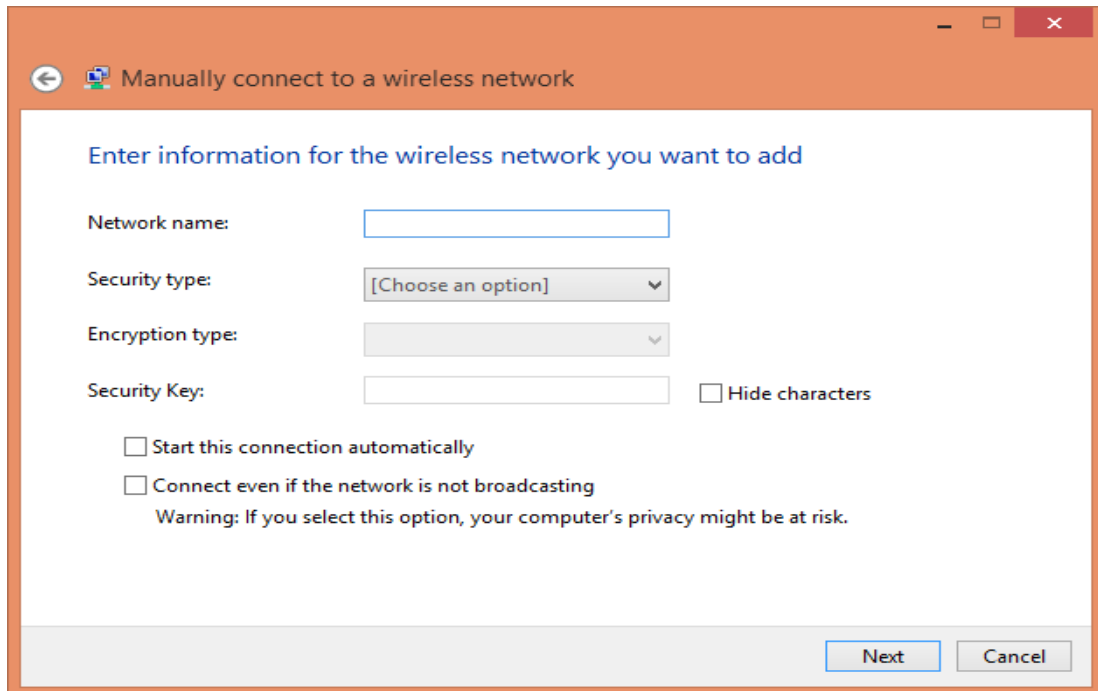
3. Select the option **Set up a new connection or network** to manually edit/create new SSID profile.



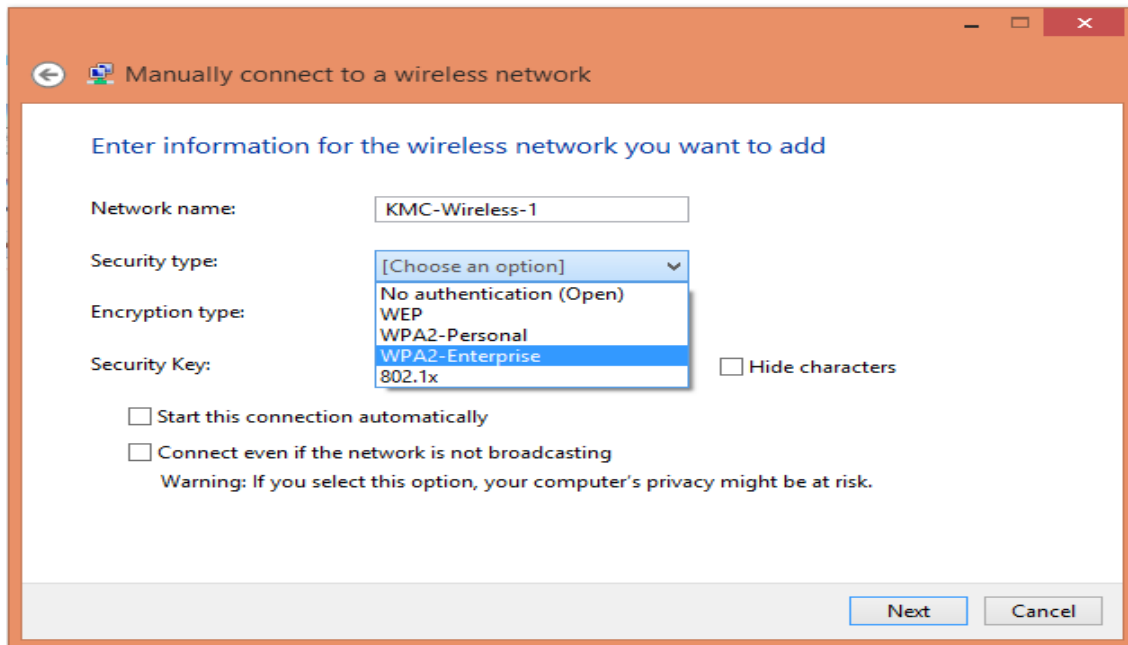
4. Select the option **manually connect to a wireless network**.



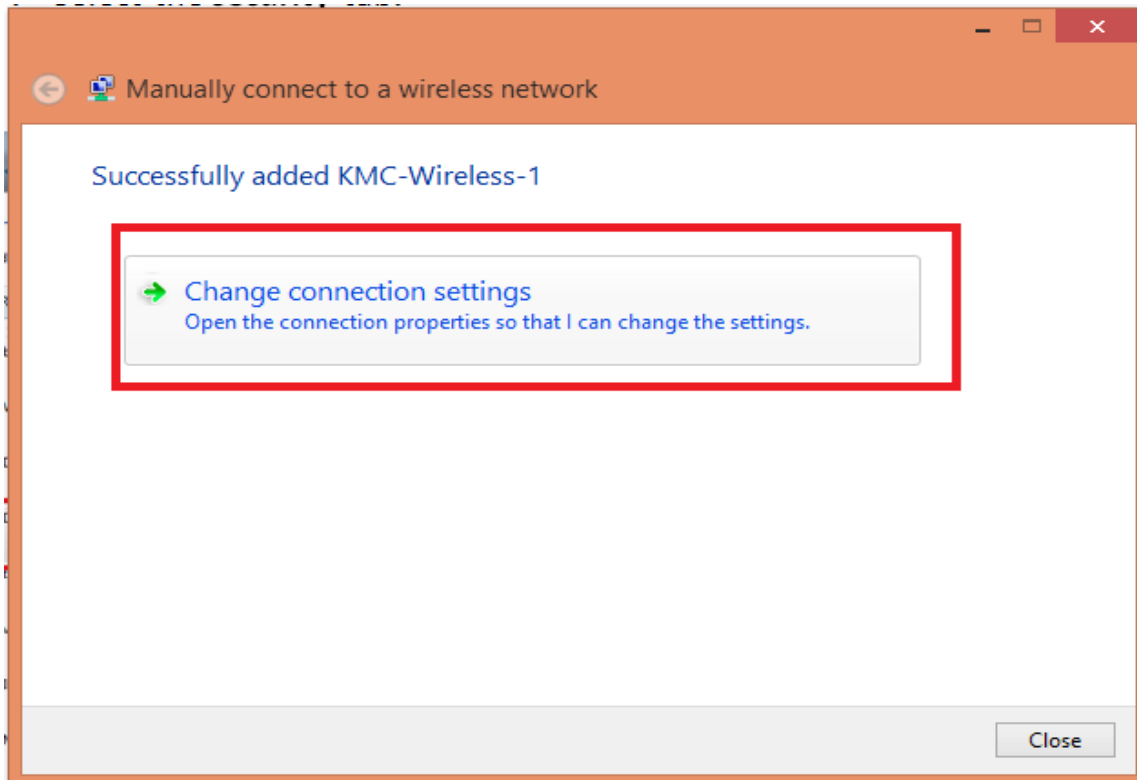
5. Selection option **Manual Create a network profile**



6. Select the profile **KMC-Wireless-1** to do the changes and security key as **WPA2-Enterprise** and click next and then finish

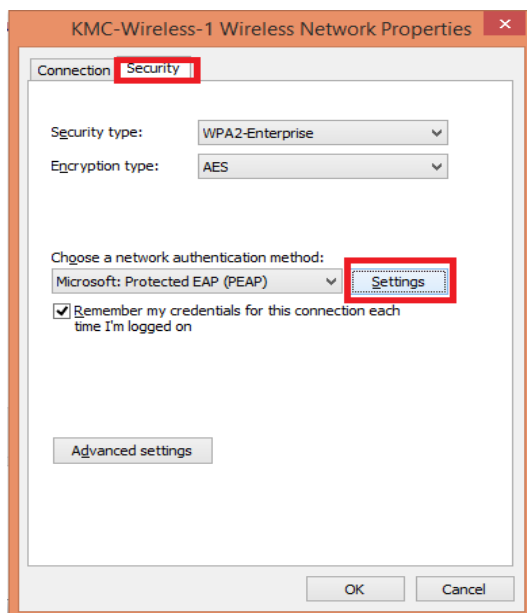


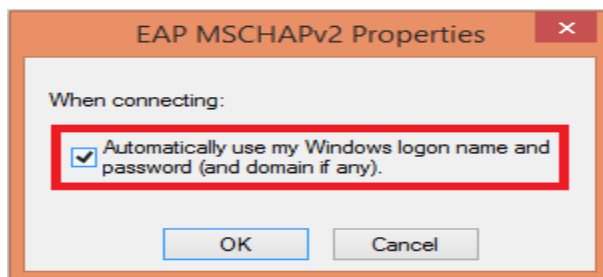
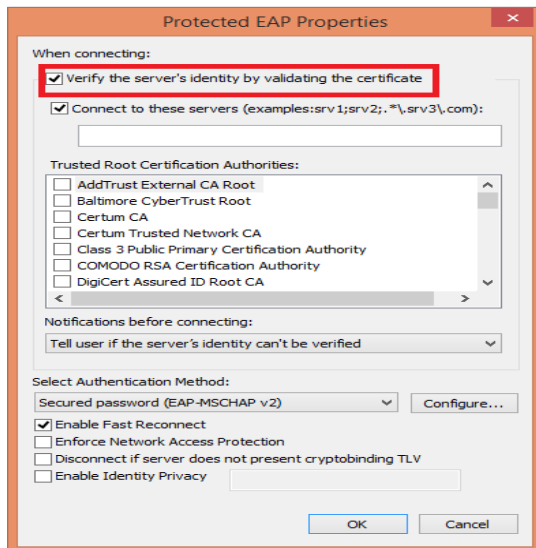
7. Select Change Connection Settings.



8.) Select Security then, the PEAP setting and **uncheck the validate server certificate** and **un-check automatically use my Windows name and password**.

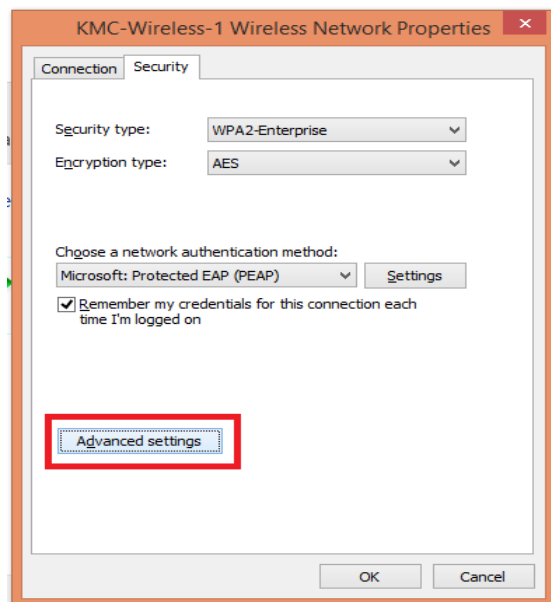
**Important point don't miss it**

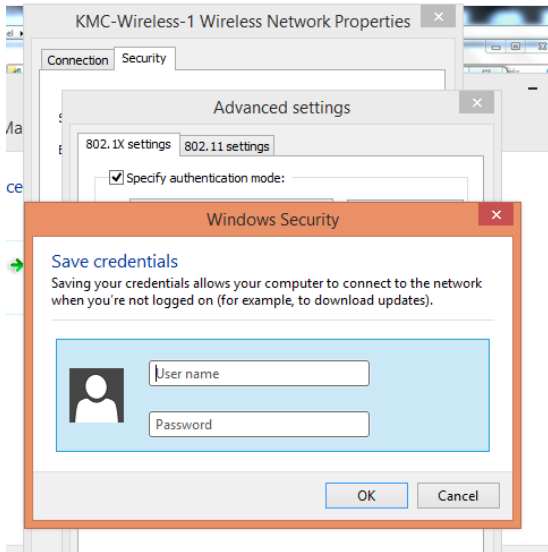
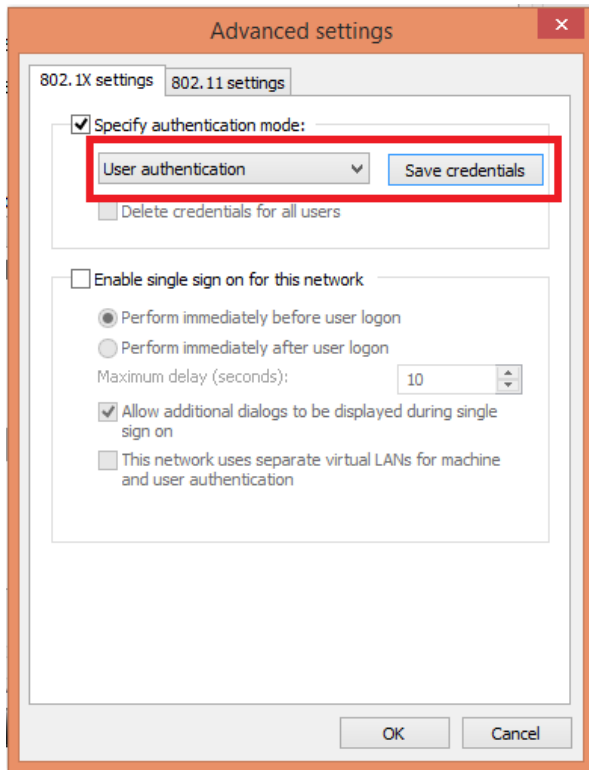




9.) Select Advance setting and select the user authentication option as mentioned in below screen and save your **username and password credentials**.

**Important point don't miss it**





10. Now you can connect the SSID and will show you the status as **connected**.

View Connection Settings

### Connections



KMC-Wireless-1 3  
Connected

### Wi-Fi



KMC-Wireless-1  
Connected



Redmi



AndroidAP



AdministrativeOffice